

BRICK
MANAGEMENT + LETTINGS



Apartment 53, Nova House Buckingham Gardens, Slough, SL1 1AY

£1,450 Per month



Apartment 53, Nova House Buckingham Gardens, Slough, SL1 1AY

£1,450 Per month

New to the market, this refurbished large unfurnished fifth floor two bedroom apartment is located in the popular Nova House development.

The apartment benefits from a long entrance hallway leading to a spacious open plan living / dining area with wooden flooring and access to a private balcony, stylish white fully integrated kitchen, two double bedrooms, luxury bathroom with bath and shower, neutral decoration throughout and secure entry-phone access.

This property comes with one allocated parking space in the underground car park.

Nova House is just a five minute walk from Slough centre and the mainline railway station.

Description



Situation

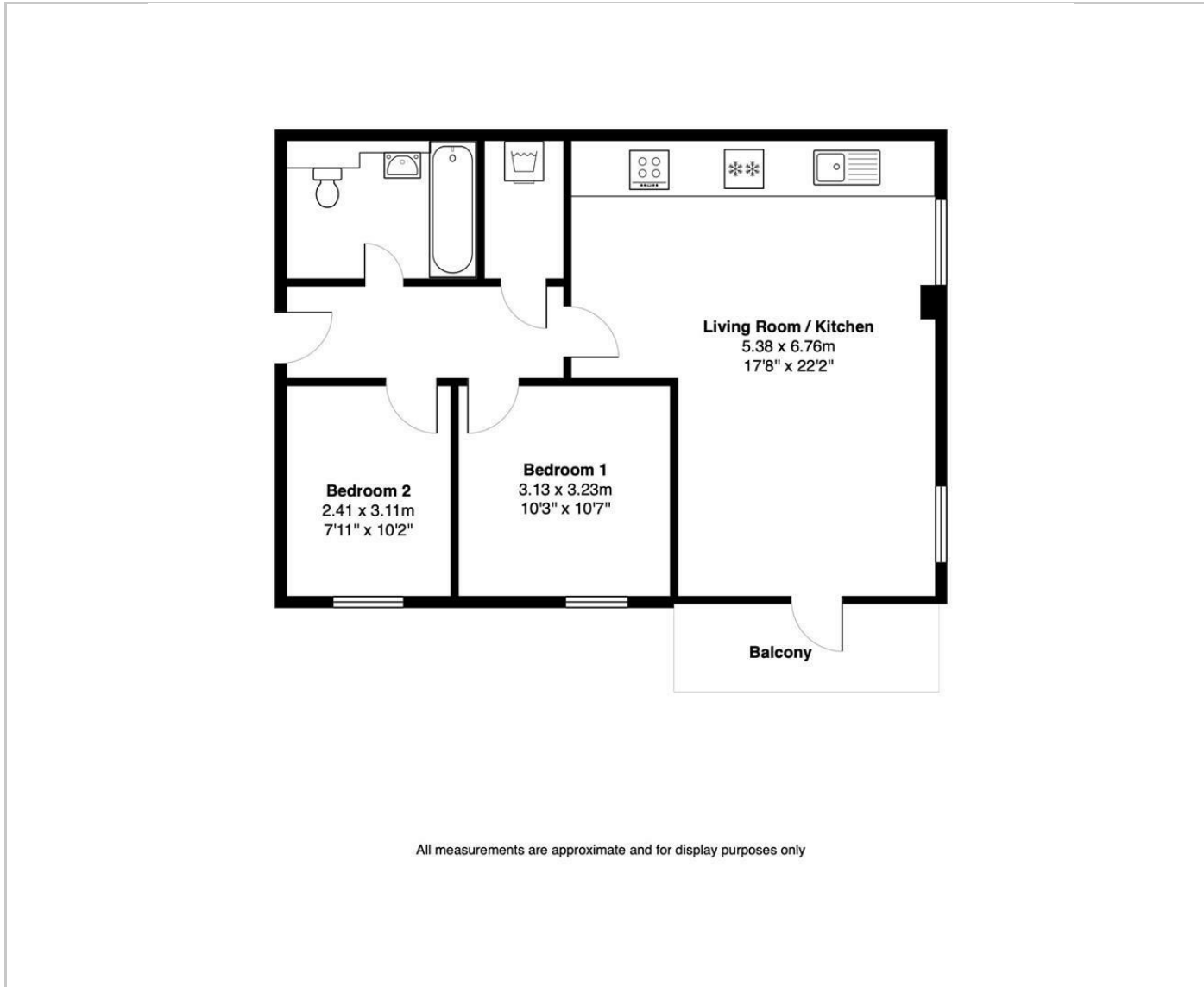


Furnished

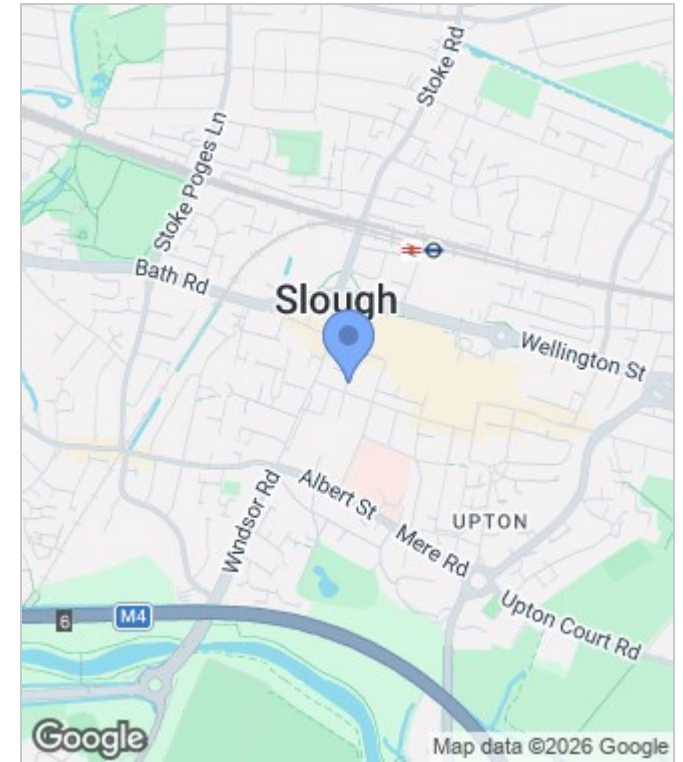
Council Tax Band: C

Available: 11th May 2026

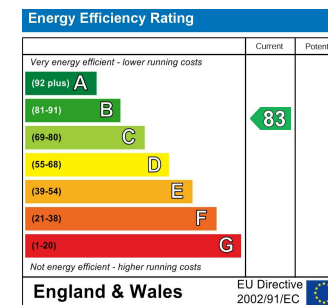
Floor Plans



Area Map



Energy Performance Graph



These particulars, whilst believed to be accurate are set out as a general outline only for guidance and do not constitute any part of an offer or contract. Intending purchasers should not rely on them as statements of representation of fact, but must satisfy themselves by inspection or otherwise as to their accuracy. No person in this firm's employment has the authority to make or give any representation or warranty in respect of the property.